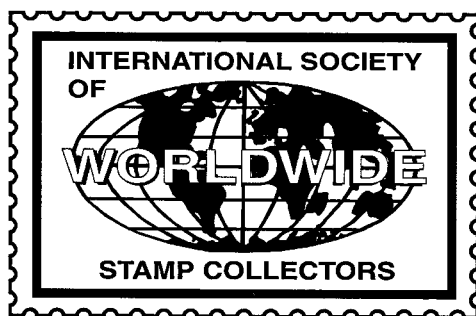


3#4v

Property of
American Philatelic Research Lib
100 Match Factory Pl
Bellefonte PA 16823-1367

The Circuit



Affiliate of: APS (#151) & ATA (#89)

www.iswsc.org

July/August 2005 • Volume 23 No. 4

The Official Journal of the International Society of Worldwide Stamp Collectors

President's Column

by **Randy Smith (#1111)**
ISWSC President

As I write this column, it is July 4th and I'm in a hotel in Rapid City on a family vacation. The kids are in the pool with my wife supervising, so I'm taking a few minutes to complete a few ISWSC tasks I didn't get done before we left. Those plans were dashed when I had high-speed internet installed, upgraded my Virus and Firewall software, switched from Windows 98 to XP, and had my PC crash (hard) — but not necessarily in that order!

The computer crash was (somewhat) resolved by a local techie. However, I'm still working on some of the side effects. While most of my data was saved, I lost all of the e-mail I had received over the past few years. (I just preach back-ups to others — I don't do them myself!) I know I still had a few e-mails to return, but I don't have a record of it. If you sent me an email and are still waiting for a response, please send me another e-mail — but do so at my new address: rasmory4@frontiernet.net.

If all of the above change isn't enough, throw in a mailing address change for me, too. After consulting for seven years, I've joined Wells Fargo as an employee — ending a three year under-employment period. I work downtown Minneapolis and the building I'm in just happens to have a loop post office in it, so I've switched my Post Office box (which was close to my former employer). My new address is: P.O. Box 2085, Minneapolis MN 55402-0085.

Amidst all that change and computer turmoil, I've been struggling to work with Executive Director candidates so that Tony Zollo can pass the baton. (No, the candidates are not making that difficult — I am!) By the time you read this, I hope the board has made their appointment. We'll send an e-mail announcement once the decision has been made, but the announcement will need to wait until the next

issue of the newsletter. I held this issue a few weeks with the goal of making the announcement, but my computer and e-mail problems prevented that from happening.

Change isn't over for me yet — I only have a few months left to serve you as ISWSC President before my second term expires. And several other Board members are also completing their second terms, meaning new volunteers are needed for elections this fall. To help oversee the elections, we also need an Election Chairman. Finally, we also need to find a new "Whatzit?" coordinator. Following the death of John Pruitt. For more information on each of these, please see the separate articles elsewhere in this newsletter.

Happy stamping from Mount Rushmore!



Seeking Nominees for Elected Office

One of the historical strengths of the ISWSC has been the number of members who have stepped forward to serve the society in various capacities. This strength must be relied upon again as nominees are now being sought for the following elected positions:

President

This person presides at all meetings of the ISWSC and its Board. He/she performs all duties incident

Continued on page 4

**OFFICERS, MANAGERS
& SERVICE CONTACTS****President:**

Randy Smith (#1111)
P.O. Box 2085
Minneapolis, MN 55402-0085 – USA
rasmary4@frontiernet.net

Executive Director & Immediate Past**President (Board Member):**

Anthony Zollo, MD (#856)
P.O. Box 150407
Lufkin, TX 75915-0407 – USA
iswsc@hotmail.com

Secretary:

Joanne Berkowitz (#98)
125 43rd Street
Sacramento, CA 95819-2101 – USA
joannebe@pacbell.net

Vice President for Charitable Services:

Mike Crump (#2126)
4708 Palm Aire Circle
Sarasota, FL 34243-4938 – USA
desoto1947@yahoo.com

Interim Vice President for Public Relations:

Tom Fortunato (#379)
28 Amberwood Place
Rochester, NY 14626-4166 – USA
stampmtf@frontiernet.net

ISWSC Director:

Duncan Koller (#2154)
8201 NE 257th Street
Battle Ground, WA 98604-5308 – USA
duncankoller@netzero.net

ISWSC Director:

Ken Wills (#2150)
5308 Shadow Glen Drive
Grapevine, TX 76051-7350 – USA
wills@airmail.net

Immediate Past Secretary**(Board Member):**

Dalene Thomas (#101)
8612 W. Warren Lane
Lakewood, CO 80227-2352 – USA
Dalene1@champmail.com

AUCTION MANAGER

Everett King (#1389)
P.O. Box 130
Whitethorn, CA 95589 – USA
Ph: 707-986-7230
stamps@whitethorn.com

WEBMASTER

Rick Simpson (#1703)
HC79 Box 52-E
Romney, WV 26757 – USA
Ph: 304-822-3494
rsimpson@141.com

NEWSLETTER EDITOR

Jennifer Arnold
2390 Willow Street
Lebanon, OR 97355 – USA
Ph: 541-990-9686
Fax: 541-259-4658
pizzazz@cmug.com

SALES CIRCUIT

Manager (U.S.): James M. Gaul (#1853)
1920 Fawn Lane
Hellertown, PA 18055 – USA
terrynjim@enter.net

OMNI CIRCUIT

Manager: Jim Millette (#1314)
8901 Marcel Cadieux #207
Montreal, PQ H2M 2L9 – CANADA
jmillett@globetrotter.net

Co-Manager: David Paul (#59)
2 Heritage Drive
Belchertown, MA 01007 – USA

Co-Manager: Thomas Pomaski (#410)
8195 National Drive
Melbourne, FL 32940 – USA
stamp10@earthlink.net

Co-Manager: Dale E. Harris (#2311)
212 Schofield
Reedsport, OR 97467-1366 – USA
harrisda@ohsu.edu

SWAP CIRCUIT

Coordinator: Randy Smith (#1111)
P.O. Box 2085
Minneapolis, MN 55402-0085 – USA
rasmary4@frontiernet.net

Large I Circuit: Scott Sadger (#882)
2140 Miller Road
Buchanan, MI 49107 – USA

Large II Circuit: John Seidl (#1646)
4324 Granby Way
Marietta, GA 30062-8150 – USA
jseidl@mindspring.com

Large III Circuit:

John McArthur (#768)
14 Stonebrook
Lawton, OK 73505 – USA
jmmcarthur@earthlink.net

Small/Definitive Circuit:

Kenneth Wills (#2150)
5308 Shadow Glen Drive
Grapevine, TX 76051 – USA
wills@airmail.net

CTO Circuit:

William Silvester (#1058)
378C Cotlow Road
Victoria, BC V9C 2G1 – CANADA
wgsilvester@shaw.ca

Super Circuit:

Robert Armstrong (#1392)
2209 SW Oak Ridge Rd.
Palm City, FL 32990-2159 – USA
googiepox@alephia.net

USA Circuit: Randy Smith (#1111)

P.O. Box 2085
Minneapolis, MN 55402-0085 – USA
rasmary4@frontiernet.net

REGIONAL REPRESENTATIVES

*Represent the ISWSC, distribute stamps
to youth programs in their region.*

Australasia: Noel Routley (#1610)
C/- Post Office
Redesdale, 3444 – AUSTRALIA
routley@netcon.net.au

British Isles: Karen Rose (#584)
47 Heron Road — Oldbury
West Midlands B68 8AG
GREAT BRITAIN – U.K.

Canada: William Silvester (#1058)
378C Cotlow Road
Victoria, BC V9C 2G1 – CANADA
wgsilvester@shaw.ca

Cuba: Cleto Sánchez (#1311)
P.O. Box 2222, CP-10200
Havana – CUBA

Eastern Europe: Jan Szyrka (#539)
ul.Srebrna 29
PL-44121 Gliwice – POLAND
szyrka@zeus.polsl.gliwice.pl

Scandinavia/Baltics:

Martti Vihanto (#830)
P.O. Box 34
FIN-20521, Turku – FINLAND

Western Europe:

LTC (ret) Alan Horwedel (#796)
Unit 30612, Box R-160
APO, AE 09154 – USA
ahorwedel@hotmail.com

*Phone or send your questions
to the appropriate volunteer.
Please include a
self-addressed stamped
envelope or IRC
for a reply.*

*Please remember that the Editor does not
mail out The Circuit. If you have any
questions about your Circuit mail
service, please contact Randy Smith, Tom
Fortunato or Tony Zollo. Thank you!*

DEADLINE FOR THE

NEXT ISSUE:

JULY 20, 2005

Whatzit? Coordinator Sought

Are you good at identifying the country a stamp comes from? Are you handy with reference materials? Do you like to solve a good mystery? If so, you are the person we're looking for!

The ISWSC is seeking one or more members to serve as coordinator(s) of the Whatzit? program. This program gives other members someone to turn to for help in identifying those difficult stamps.

The coordinator(s) are responsible for providing timely responses to member's requests for help and for writing a short Whatzit? column for the newsletter. The column highlights some of the stamps submitted for identification, sources for stamp identification, challenging stamps you've come across, or maybe even something that still as you stumped.

If this sounds interesting to you, or if you would like more information, please contact Randy Smith.



Elections Chairperson Needed

An Elections Chairperson is needed to oversee the balloting process for our upcoming election. This short term position (2-3 months, but only a few hours of work) requires an individual to receive and count ISWSC ballots. Each ballot postcard will be pre-addressed to you.

After counting the ballots and waiting for the deadline to pass, the Election Chairperson then sends the ballots to the ISWSC secretary who verifies the totals. Once verification has been completed, your duties are over.

If you would be interested in serving the ISWSC in this manner, please contact Randy Smith (see page 2 for contact information).



Dues/Advertising Policy

Dues Information:

Single/Dealer/Club membership: \$12.00*

Youth membership (under 18): \$10.00*

Family membership (up to 4 persons in one residence): \$19.00*

*Plus 250 large commemoratives for the Youth Program or equiv. donation in US\$. Dues above are for one year and include six newsletters per year. You may sign up for three years at a time. For an application or further information send SASE or IRC to: ISWSC, P.O. Box 150407, Lufkin TX 75915-0407, USA. *There will be a \$2 per year discount if the renewal is received at least one month prior to the current expiration date.*

Advertising Policy:

For reasons of accountability, only members of the ISWSC, APS or ASDA may place ads. All ads dealing with philatelic concerns are acceptable. We reserve the right to edit out objectionable language. Advertisers are expected to respond to all inquiries, so be sure you can handle the responses before you offer to trade, buy or sell. If you have a bad result from answering an ad, contact the Editor. We will try to resolve the conflict.

Display Rates (Camera Ready*) per insertion:

Full page: \$75.00

Half page: \$40.00

Quarter page: \$20.00

Per column inch: \$5.00

Six repeat insertions of the same ad for the cost of five ads (one free). We will also offer a two-sided insertion for \$125 per issue.

*Camera Ready means ready to paste up or scan and print. Reductions and typesetting extra.

Classified Rates per insertion:

First 30 words, including name, address, and ZIP code are \$3. Additional words are 20 for \$1.

NOTE: State abbreviations = one word; "P.O. Box 1234" = two words; ZIP code = one word.

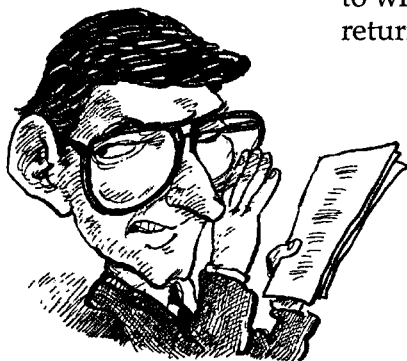
Make all checks payable to ISWSC in U.S. funds. Send text and payment for ads to the Editor. All addresses can be found on page 2.

Insurance Policy Pays Off

by Randy Smith (#1111)
ISWSC President

Over the past year, the ISWSC has had to place an insurance claim for a few mailings that became lost (for various reasons). While our insurance paid for these losses, there are a few things you can do to prevent future claims and keep our insurance rates low.

- 1- When mailing items, use the recipients complete address and include our full return address. Placing those addresses inside the package will also help in the event the outside addresses are ruined.
- 2- NEVER refuse a mailing. Doing so may lead to your removal from that program (i.e. Omni or Sales Circuit).
- 3- If you will be gone for an



extended period of time (i.e. more than two weeks), notify the appropriate manager(s) far in advance of your time away. This gives the managers time to either hold mailings until your return or place you later in rotation.

- 4- Notify your spouse, children or estate executor of what should happen to your collection upon your death or prolonged illness. For ISWSC material, make sure they are kept together with instructions as to who to contact if you are unable to return the materials.
- 5- If a claim is necessary, contact the appropriate manager and the ISWSC Executive Director quickly. Insurance claims must be filled within a short period of time of the loss in order to be considered.



Seeking Nominations

Continued from page 1

to the office as described by *Robert's Rules of Order* and recommends such action as he/she believes will increase the effectiveness of the organization.

Secretary

This person keeps a permanent record of all society Board of Director proceedings, including Board meetings and votes. The Secretary also attests to all legal documents of the Society and performs other duties as requested by the Board and/or the Executive Director.

Vice President for Public Relations

This person performs duties with respect to promoting the ISWSC, monitors and assists the ISWSC Regional Representatives, and is responsible for securing an Elections Chairman.

Vice President for Charitable Programs

This person serves as Chairperson for the Youth Program and assumes other responsibilities as assigned by the Board. This person also serves in place of the President, should the President be absent or unable to serve.

The term of office for each position is two years with a maximum of two consecutive years in the same office. Individuals in these positions, along with two at-large directors elected in opposite years, comprise the ISWSC Board and are responsible for the oversight and management of the ISWSC.

Any member of the ISWSC is eligible to run for elected office. To express your interest in running for a position, to obtain more information, or to recommend a fellow member for an office, please contact Randy Smith (#1111), ISWSC President, or Tony Zollo (#856) ISWSC Executive Director. Nominations must be received by September 15, 2005.



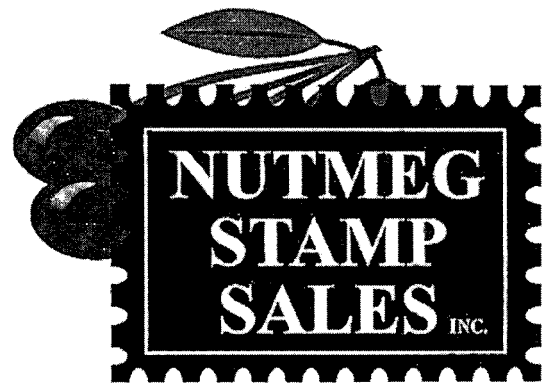
We've Got the Whole World in Our Hands



**And we'd
like it put
it in
yours!**

Nutmeg Stamp Sales now offers one large sale a month (loaded with worldwide stamps!) and a "Baby Sale" for all you bargain hunters. This month alone more than 9,000 items are up for sale. One of them could be the stamp that's been eluding you for years.

Bids are welcome by mail,
telephone, fax, email or
via the
Nutmeg website.
Get a free auction
catalogue by calling
1-800-522-1607.
Save time by viewing
auction lots online at
www.nutmegstamp.com



P.O. Box 4547

Danbury CT 06813

Fax: 203-798-7902

Email:

info@nutmegstamp.com

Swap Circuit News

by Randy Smith (#1111)
ISWSC President

There are a couple of changes to report concerning the Swap Circuit program — both involving managers.

First, Andrew Titley (#2366) has stepped down as manager of the USA Circuits. Andrew is a student and is involved in a summer-long program, making continuing as manager impossible. My thanks to Andrew for getting the USA Circuits up and running and best wishes with your remaining schooling!

For at least now, I will manage the USA Circuit. This Circuit was delayed a bit, but now all members are on the requested number of Circuits and all are in member's hands. (Except the three that already made the rounds and came back to me right before vacation!)

Unfortunately, I don't have as happy a story to tell for the Super Circuits. Although I'm pleased to announce Robert Armstrong (#1392) will be managing this Circuit, I've been slow in getting things up and running and turned over to him. It's a bit overwhelming to have to start all the Circuits up as a new manager, so I like to get them started, then turn them over to the new manager.

While I do have about half of the International Super Circuits out to members, I'm still working on getting the domestic Super Circuit going. I am hopeful that by the time you read this, I will have all Super Circuits out and Robert will be firmly in place.

If you are currently a Swap Circuit member, remember you can increase or decrease the number of Circuits you are on by contacting me. For Circuit types you currently participate in, you can be on up to four Circuits at no additional fee. If you currently are at five or more, you can increase to up to nine at no additional fee. You may increase above four Circuits or start a new Circuit type simply by sending me the proper stamp fee and a note indicating what you want.

For those who aren't currently participating, now's a great time to join. Just contact me via e-mail or letter (see page 2 for addresses) and I'll get you the complete details.

Happy swapping!

*For those
who aren't
currently
participating,
now's a great
time to join.*

Grand Rapids Calls!

by Tom Fortunato (#379)
Vice President for Public Relations

The ISWSC will hold an open membership meeting during Stampshow'05, America's largest stamp show, this year in Grand Rapids, Michigan. The show takes place Thursday, August 4th through Sunday, August 7th at the Grand Rapids Convention Center.

The show is annually sponsored by the American Philatelic Society, this nation's largest stamp collecting organization. It will feature over 100 dealers from across the U.S., Canada, and Europe, along with meetings and seminars throughout all four days.

The ISWSC will be meeting at 11:30am on Sunday, August 7th. Please consider joining other ISWSC members for the meeting if you can!

If you plan to be at the show, read the schedule of events for up to the minute details. The hour long meeting will be hosted by Tom Fortunato. Contact him by email if you plan to attend at stampmf@frontiernet.net.



Stamp Collecting Theme Songs?

by Joseph Palko (#421)

Has the name of a song ever reminded you of your favorite hobby — stamp collecting? Or even the lyrics to a song? Here are a few that I came up with:

- Return to Sender
- Hey, Mr. Postman
- The Train They Call The City of New Orleans
- I'm Going to Sit Right Down and Write Myself a Letter
- Love letters in the Sand

